

EAGLE'S EYE

Eagle's Nest Footprint

Did you know that our Eagle's Nest mine is planned to be underground?

The footprint will be smaller than 1 km². Our plan includes no tailings above ground and no open pit mine, meaning there will be minimal disturbance to the surrounding peatland.

So, how does underground mining work? The first step in our plan is to go underground and remove granodiorite rock (not Eagle's Nest ore). This rock, which is environmentally safe for use above ground, will be used in the construction of the site, airstrip, and regional infrastructure. By removing the granodiorite rock, we also create the space where we will put our tailings back underground.

What are tailings? Tailings are the materials that are left over after we separate the nickel, copper, and platinum group elements from the ore we mine at Eagle's Nest. Tailings will be combined with cement binder and returned back underground into the spaces created from removing the ore and the granodiorite rock. The plan is for 100% of tailings to be stored underground, eliminating the need for a tailings pond above ground.

During the past decade, we have engaged with numerous industry experts and local communities to determine the most sustainable mine plan. Eagle's Nest has sustainability and safety at the core of its design and we continue to research ways to further improve our plan as we work towards development. (see page 2)



Marten Falls Chief Achneepineskum and Webequie Chief Wabasse alongside Minister Pirie at the NRL ToR announcement

Northern Road Link ToR approval

By Ryan Tuomi, Manager, Community Engagement

Congratulations to Marten Falls and Webequie First Nations on the approval of their Environmental Assessment (EA) Terms of Reference (ToR) for the Northern Road Link (NRL) project. This road project is the third and final road proposed to access the Ring of Fire (RoF) and was approved by the Ontario Ministry of the Environment and Climate Change on March 6, 2023.

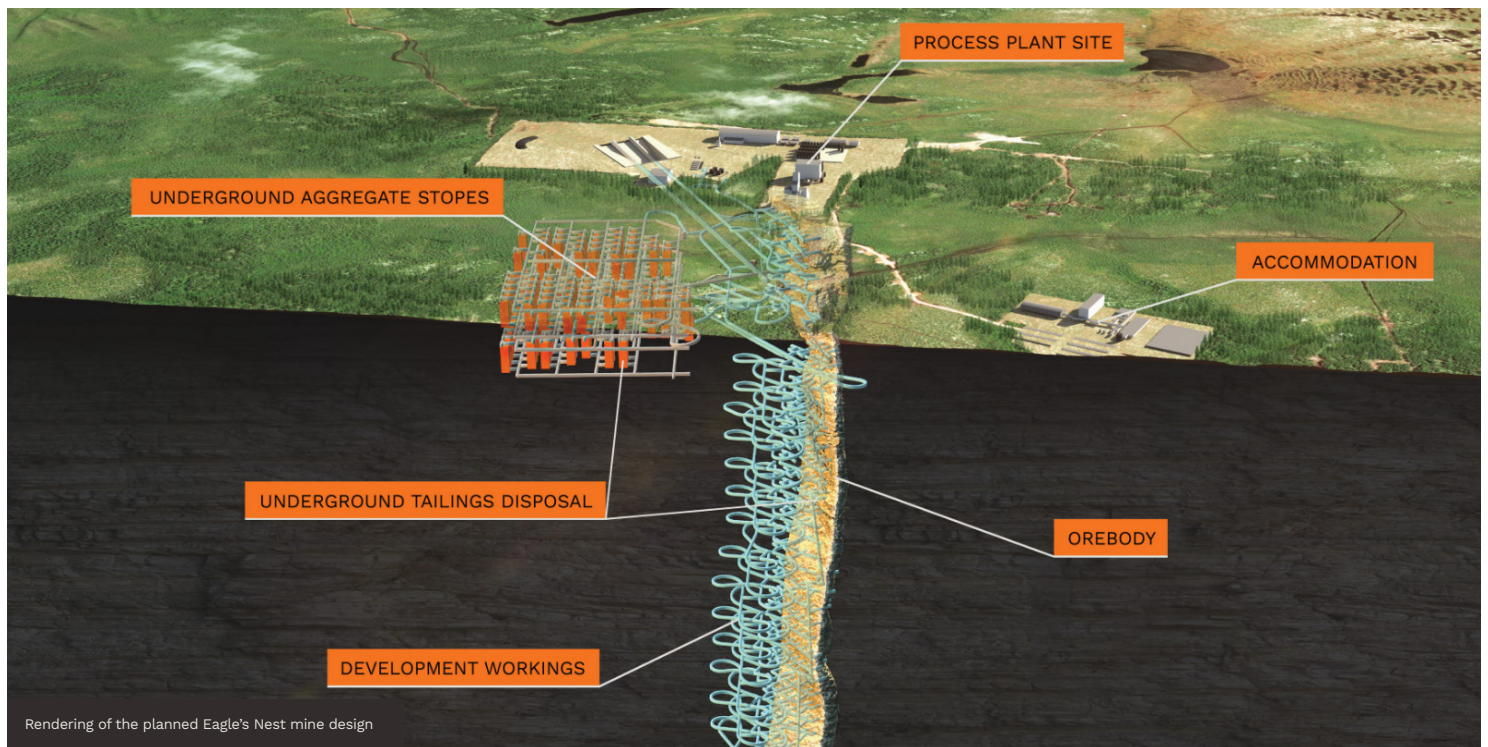
In 2020, Marten Falls and Webequie, along with the Ontario government, announced an agreement to move forward with planning and development of the NRL. The proposed new road will link the Marten Falls Community Access Road to the Webequie Supply Road, completing a new network of infrastructure from Aroland First Nation to Webequie and including the RoF mineral deposits.

The ToR is essentially Marten Falls and Webequie's work plan for what is going to be studied during the preparation

of an EA. An EA is a study which assesses the potential environmental effects (positive or negative) of the proposed road. Key components of an environmental assessment include consultation with First Nations, government agencies and the public; consideration and evaluation of alternatives; and the management of potential environmental effects.

Chief Achneepineskum said: "On behalf of Marten Falls, I am pleased to move forward with NRL ToR approval and the start of the Environmental Assessment! It is important as our young people and members are relying on us leaders to provide employment and training opportunities but also a sustainable economic base for our communities!"

For links to the three road project's webpages, go to: www.rofmetals.com/projects/community-infrastructure-corridor



Welcoming Kristan Straub as CEO



At the beginning of March, Ring of Fire Metals began a new chapter in our journey when our new CEO, Kristan Straub, joined the team.

Kristan attributes much of his love for the outdoors and learning to his maternal grandparents, Arthur (Art) and Eva Solomon. Art Solomon was an internationally recognized spiritual and social teacher to both Canada's Indigenous and non-Indigenous communities. Art was an artisan and a craftsman, having a strong passion for supporting and empowering Indigenous people. As a result of his work in Northern Ontario, a member of Kasabonika gave Art the name Kesheyanakwan (meaning Fast Moving Cloud) when he connected the community's crafts to southern and international markets enabling them to receive full value for their work. Kristan spent most of his childhood holiday time with his grandparents learning the importance of being a steward of the land and its people.

Kristan studied geology and his appetite for learning led him on many adventures across the world. From early grass roots exploration in Mongolia and the High Arctic of Canada, to project development in Tanzania and Sudbury, to operations management in the South Pacific and Nunavik region of Northern Quebec. His interest in learning more about operations and problem solving led him to shift into operations management, where he had the opportunity to focus on leadership, people growth and mentorship and environmental stewardship. Working in remote locations with Indigenous communities around the world led Kristan to this role. Kristan's top priority has always been deeply rooted in building trust and relationship building, which were priorities important to Ring of Fire Metals when filling the new CEO role.



"I'm looking forward to our shared work delivering results for local communities and stakeholders and I am committed to doing this in an open, honest and transparent manner."

- Kristan Straub